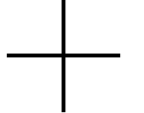
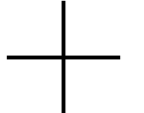


正样
2023.10.08
B00

Copyright: Copyright infringement reserved.

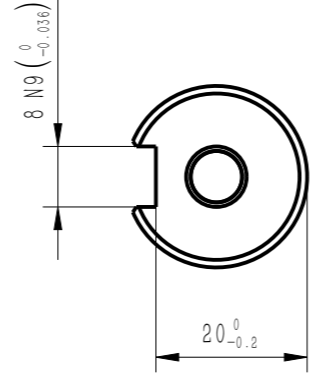
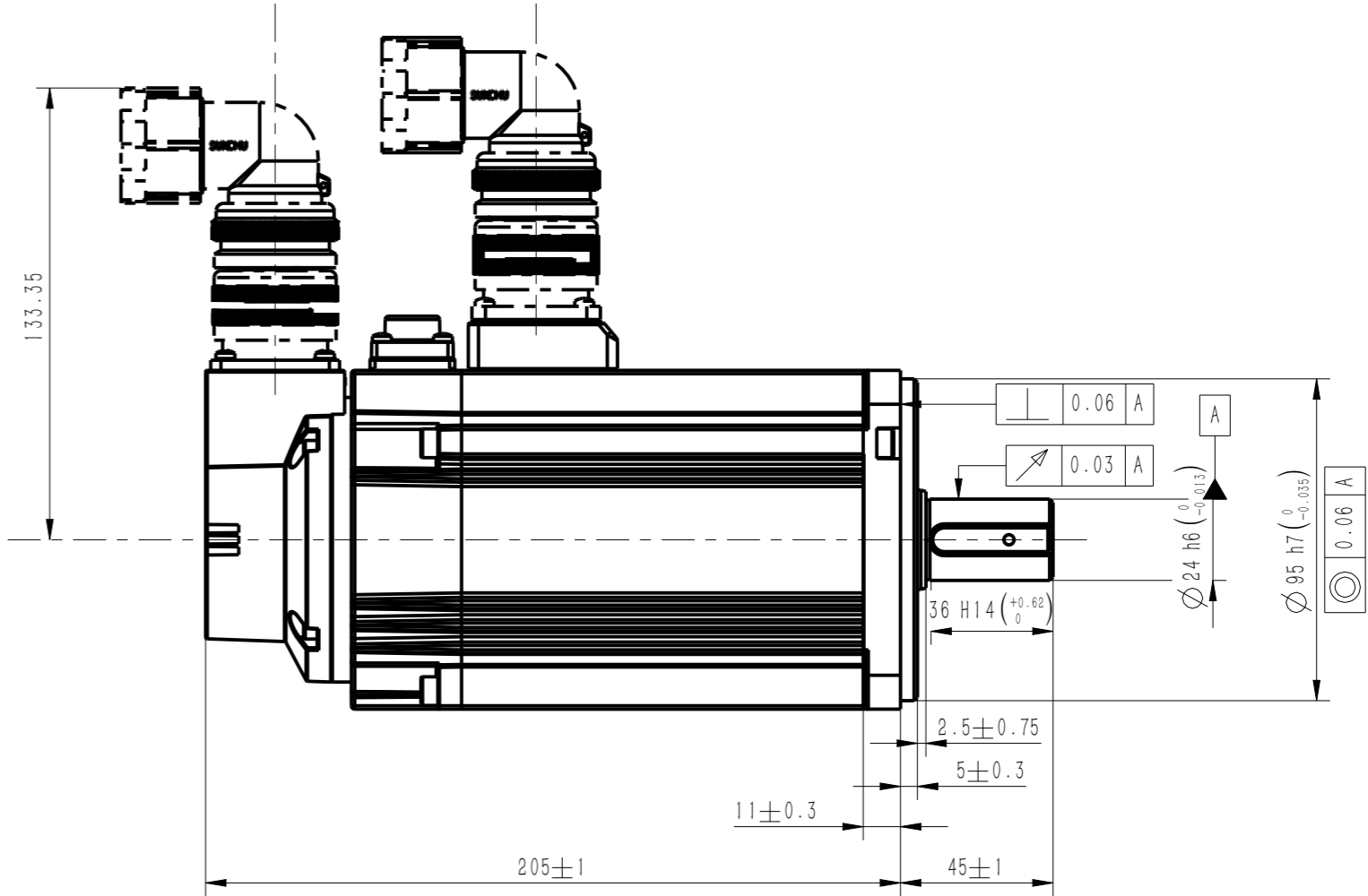
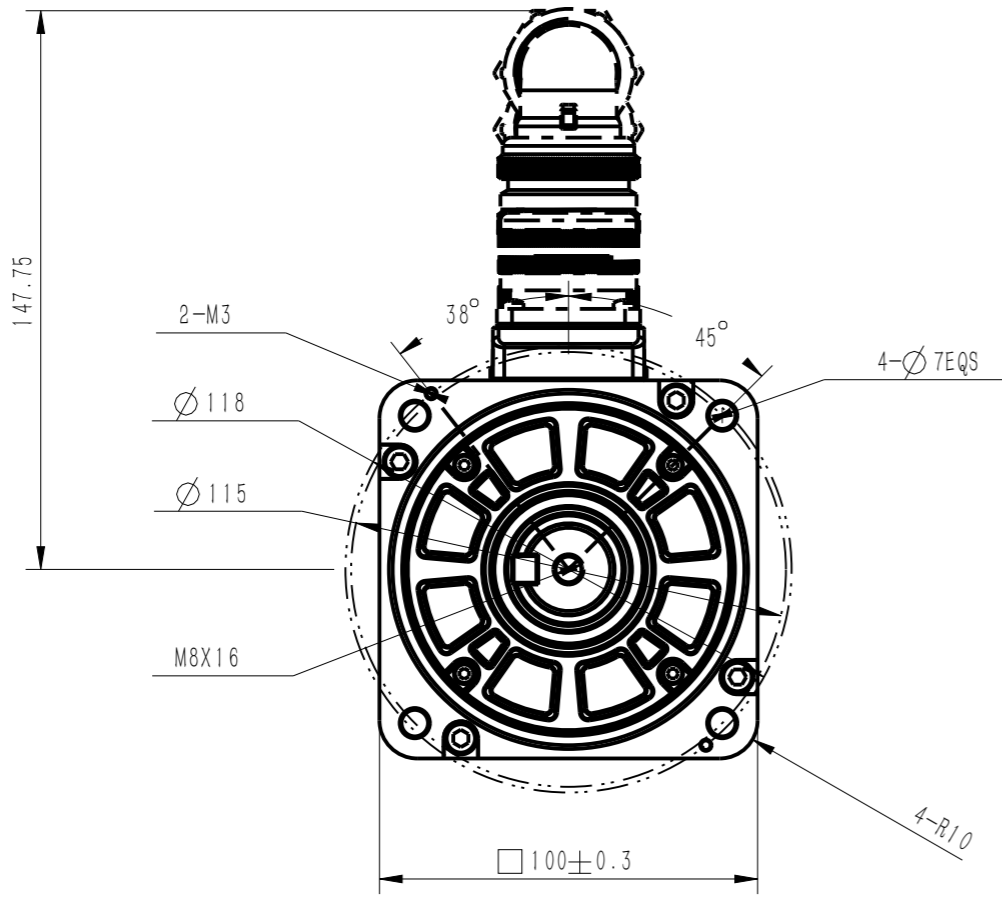


INOVANCE

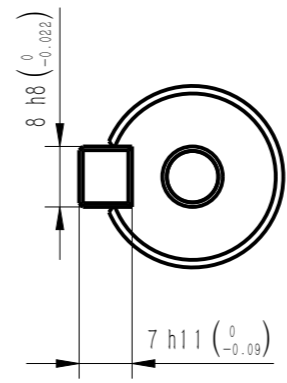
INOVANCE

外部公开

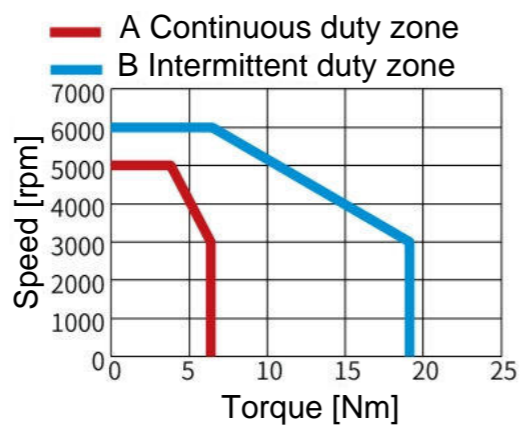
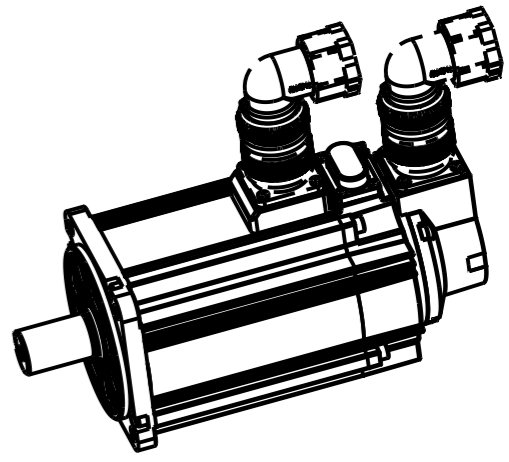
Amendment	Description




Dimension of shaft end



Dimension of shaft end with key



Basic function parameters	
Rated power kW	2.0
Rated voltage V	220
Rated current A	≤11.3
Pea current at rated speed A	≤42
Rated torque Nm	6.36
Peak torque at rated speed Nm	19.1
Rated speed rpm	1500
Max speed rpm	4500
Rotor inertia kg*cm ²	3.74
Encoder resolution	26bit
insulation class	F
Protection level	IP67
Static torque of brake Nm	8
Brake power supply V	24(±10%)
duty cycle	S1
Radial line load N	≤686
Axial load N	≤196

				Motor Outline Drawing			01117922-WX		
B00	New Archive	/	20230916						
Version	Change method	Change by	Date						
Design	/			/			Mark		INOVANCE
Check	/								
Craft	/								
Verify	/			Weight	Scale	Version	Page 1 of 1		
Standardization	/			kg	1 : 2	B00	Model	MS1H2-20C30CB-A334R-INT	
Approve	/								